

# Tourney

Before use, read these instructions carefully, and follow them for correct use.

In order to realize the best performance, we recommend that the following combination be used.

Series	MEGARANGE Tourney 40		Tourney 30	Tourney 22	Tourney 15	
	21-gears	18-gears				
Gears	21-gears	18-gears	21-gears	18-gears	15-gears	
Shifting lever	Right	SL-RS40-7	SL-RS40-6	SL-RS40-7	SL-RS30-6	SL-RS30-5
	Left	SL-RS40-L	SL-RS40-L	SL-RS40-L	SL-RS30-L	SL-RS30-L
Outer casing	SIS40	SIS40	SIS40	SIS40	SIS40	
Front derailleur	FD-TY32-A	FD-TY32-A	FD-TY32	FD-TY22-GS	FD-TY15-GS	
Front chainwheel	FC-TY30-A	FC-TY30-A	FC-TY30	FC-TY30	FC-TY30	
Rear derailleur	RD-MR40-7	RD-MR40-6	RD-TY30-7	RD-TY22-GS	RD-TY15-GS	
Bottom bracket	BB-TY30	BB-TY30	BB-TY30	BB-TY30	BB-TY30	
Multiple freewheel	MF-HG40-7	MF-HG40-6	MF-HG37	MF-HG22	MF-Z015	
Chain	CN-HG50	CN-HG50	CN-HG50	CN-UG50	CN-UG50	
Bottom bracket cable guide	SM-SP18	SM-SP18	SM-SP18	SM-SP18	SM-SP18	

## Specifications

Shifting lever						
Model number	SL-RS40-7	SL-RS40-6	SL-RS30-6	SL-RS30-5	SL-RS40-L	SL-RS30-L
Gears	SIS 7-gears	SIS 6-gears	SIS 6-gears	SIS 5-gears	SIS 3-gears	Friction

Front Derailleur				
Model number	FD-TY32-A	FD-TY32	FD-TY22-GS	FD-TY15-GS
Front derailleur installation band diameter (Normal type)	S, M	S, M	S, M	S
Front derailleur installation band diameter (Top route type)	S, M	S, M	S, M	
Stroke (A-A')	38-54	38-54	38-54	38-54
Chainstay angle (α)	66° - 69°	66° - 69°	66° - 69°	66° - 69°

Front chainwheel	
Front chainwheel tooth combination	48T-38T-28T
Crank arm length	170mm
Pedal thread dimensions	BC 9/16" X 20 T.P.I. (English thread)
Bottom bracket cup thread dimensions	BC 1.37" X 24 T.P.I. (68, 73 mm), M36 X 24 T.P.I. (70 mm)

Bottom Bracket					
Type	Chain line	Spindle length	Shell width	Stamped marking	Thread dimensions
Triple	47.5mm	122.5mm	68mm 70mm	D-NL	BC1.37 X 24 T.P.I. M36 X 24 T.P.I.

Rear derailleur					
Model number	RD-MR40-7	RD-MR40-6	RD-TY30-7	RD-TY22-GS	RD-TY15-GS
Type	MGS	MGS	GS	GS	GS
Gears	7-gears	6-gears	7-gears	6-gears	5-gears
Total capacity	40T	40T	34T	34T	34T
Rear largest sprocket	28-34T	28-34T	28T	28T	28T
Rear smallest sprocket	14T	14T	14T	14T	14T
Front chainwheel tooth difference	20T	20T	20T	20T	20T

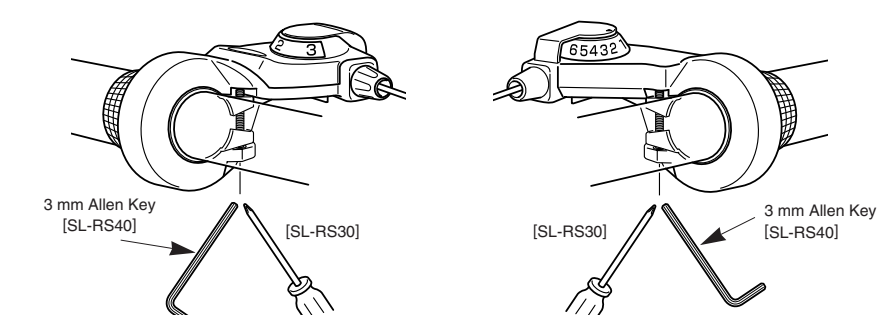
Sprocket tooth configurations			
Gears	7-gears	6-gears	5-gears
Tooth combination	14, 16, 18, 20, 22, 24, 34T 14, 16, 18, 20, 22, 24, 28T	14, 16, 18, 21, 24, 34T 14, 16, 18, 21, 24, 28T	14, 17, 20, 24, 28T

- Notes:**
- FD-TY15-GS and FD-TY22-GS are friction-compatible, and cannot be used in combination with the SL-RS40-L.
  - Apply grease to the thread section of the bottom bracket and to the inside thread of the adapter before installing the bottom bracket.
  - Use an outer casing which still has some length to spare even when the handlebars are turned all the way to both sides. Furthermore, check that the shifting lever does not touch the bicycle frame when the handlebars are turned all the way.
  - Because the high cable resistance of a frame with internal cable routing would impair the SIS function, this type of frame should not be used.
  - For smooth operation, always be sure to use the specified outer casing and the bottom bracket cable guide.
  - To ensure the best performance, be sure to use only the specified type of chain. The wide type chain cannot be used.
  - For any questions regarding methods of installation, adjustment, maintenance or operation, please contact a professional bicycle dealer.

**SHIMANO**  
SHIMANO AMERICAN CORPORATION  
One Holland Irvine CA 92618 U.S.A. Phone 949-951-5003

**SHIMANO EUROPA** SHIMANO INC.  
Industrieweg 24 NL-8071 CT Nunspeet Holland Phone 31-341-272222 77 Oimatsu-cho 3-cho Sakai Osaka 590-8577 Japan Phone 0722-23-3243  
Please note: specifications are subject to change for improvement without notice. (English)  
©Apr. 1998 by Shimano Inc. XBC SZK Printed in Singapore

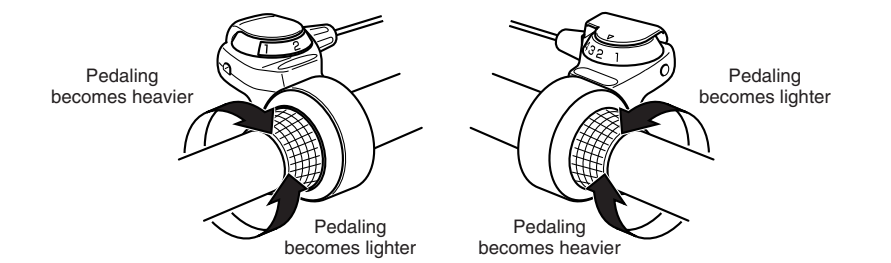
## Mounting the shifting lever



Install the brake lever in a position where it will not obstruct brake operation. Do not use in a combination which causes brake operation to be obstructed.

Tightening torque: 2Nm (18 in. lbs.)

## Gear shifting operation



## Installation of the bottom bracket

Install using the special tool TL-UN74. First install the main body, then the adapter.



Tightening torque: 50 - 70 Nm (435 - 608 in. lbs.)

## Installation of the front chainwheel

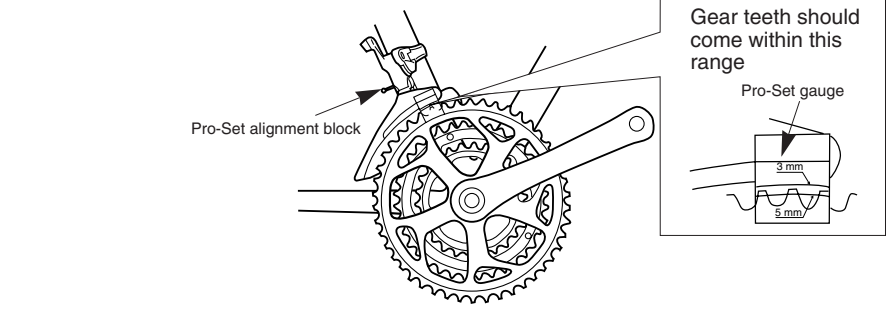
Use the cotterless crank extractor (TL-FC10) to install the front chainwheel.



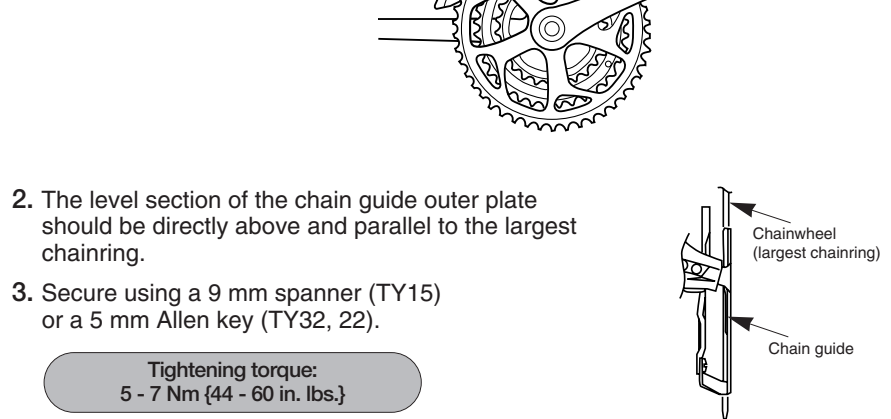
Tightening torque: 35 - 50 Nm (305 - 435 in. lbs.)

## Installation of the front derailleur

1. < FD-TY32 >  
Adjust and then install the front derailleur as shown in the illustration. Do not remove the Pro-Set alignment block at this time.



< FD-TY22 / FD-TY15 >  
Install so that there is 1 - 3 mm of clearance at the closest point between the largest chainring and the bottom edge of the chain guide.

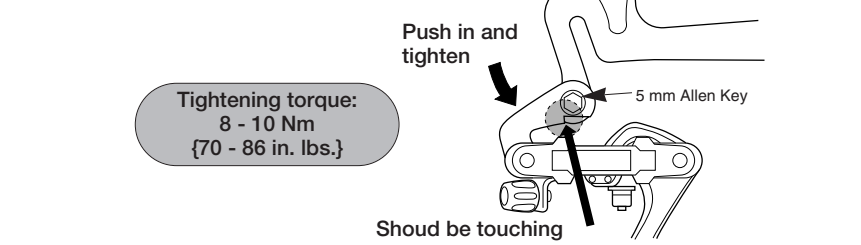


2. The level section of the chain guide outer plate should be directly above and parallel to the largest chainring.  
3. Secure using a 9 mm spanner (TY15) or a 5 mm Allen key (TY32, 22).

Tightening torque: 5 - 7 Nm (44 - 60 in. lbs.)

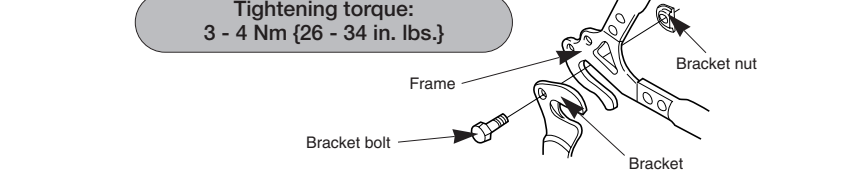
## Installation of the rear derailleur

Direct-mount type



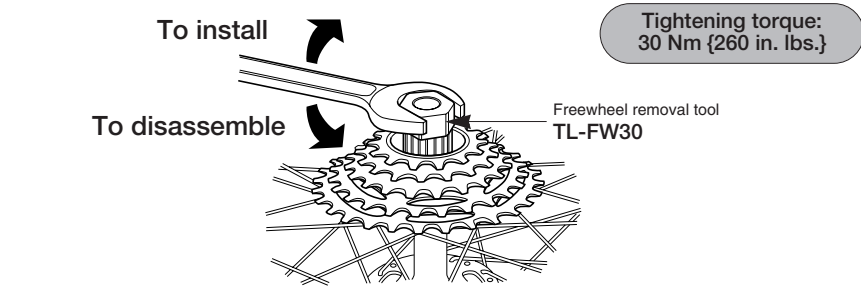
Tightening torque: 8 - 10 Nm (70 - 86 in. lbs.)

Bracket type



Tightening torque: 3 - 4 Nm (26 - 34 in. lbs.)

## Installation of the freewheel



Tightening torque: 30 Nm (260 in. lbs.)

## Chain length

If the rear derailleur is a GS type  
Add 2 links (with the chain on both the largest sprocket and the largest chainring)

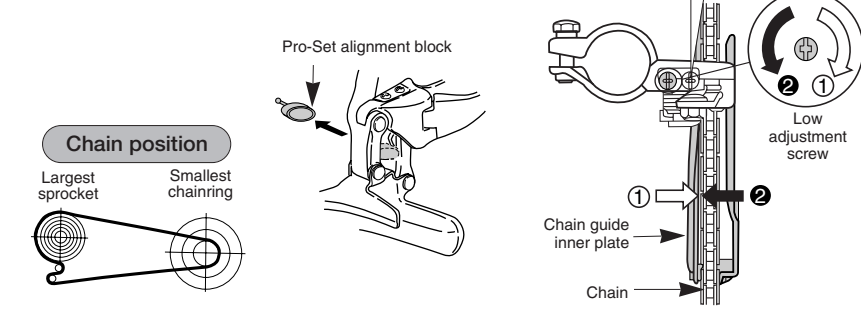


## Adjustment

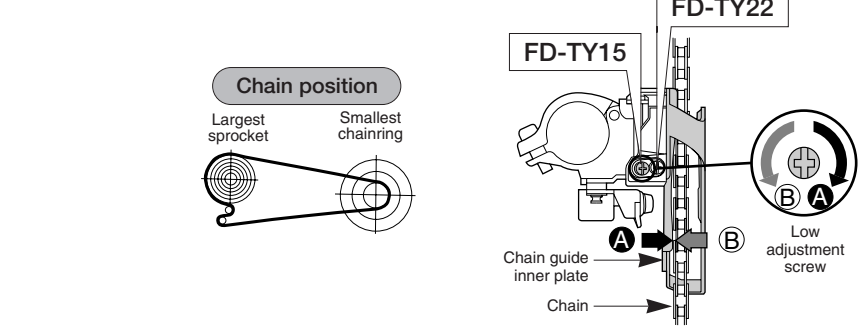
Be sure to follow the sequence described below.

1. Low adjustment

< FD-TY32 >  
First remove the Pro-Set alignment block. Next, set so that the clearance between the chain guide inner plate and the chain is 0-0.5 mm.



< FD-TY22 / FD-TY15 >  
Set so that the clearance between the chain guide inner plate and the chain is 0-0.5 mm.



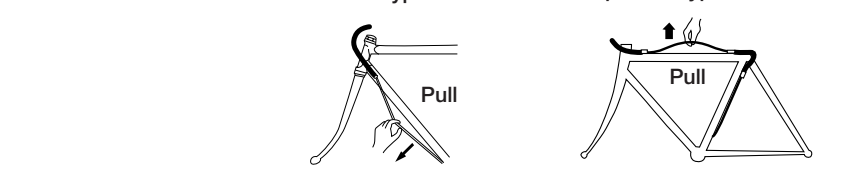
2. Connection and securing of cable

While firmly pulling the cable, tighten the fixing bolt with a 9 mm spanner (TY15) or a 5 mm Allen key (TY32, 22) to secure the cable.

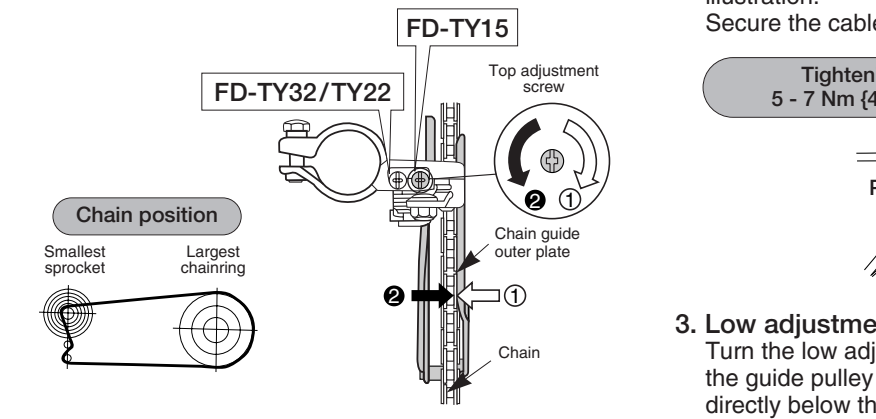
Tightening torque: 5 - 7 Nm (44 - 60 in. lbs.)

3. Adjustment of cable tension

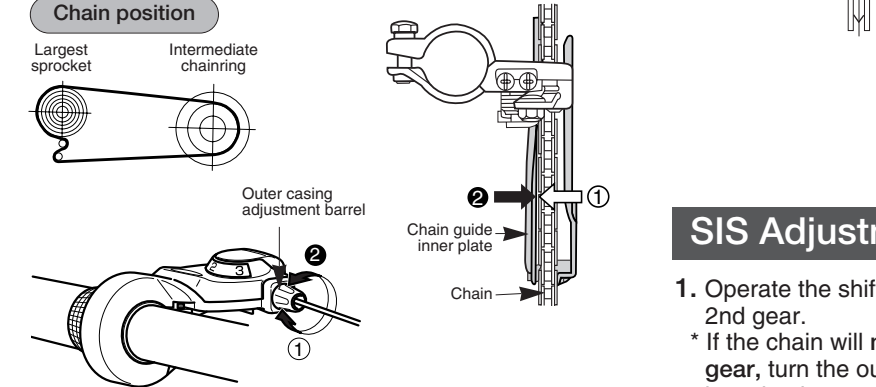
After taking up the initial slack in the cable, re-secure to the front derailleur as shown in the illustration.



4. Top adjustment  
Set so that the clearance between the chain guide outer plate and the chain is 0-0.5 mm.



5. Adjustment of the intermediate chainring (SL-RS40-L)  
Set the chain onto the largest sprocket, and at the front, move the chain from the largest chainring to the intermediate chainring. Adjust using the cable adjusting bolt so that the clearance between the chain guide inner plate and the chain is 0-0.5 mm.



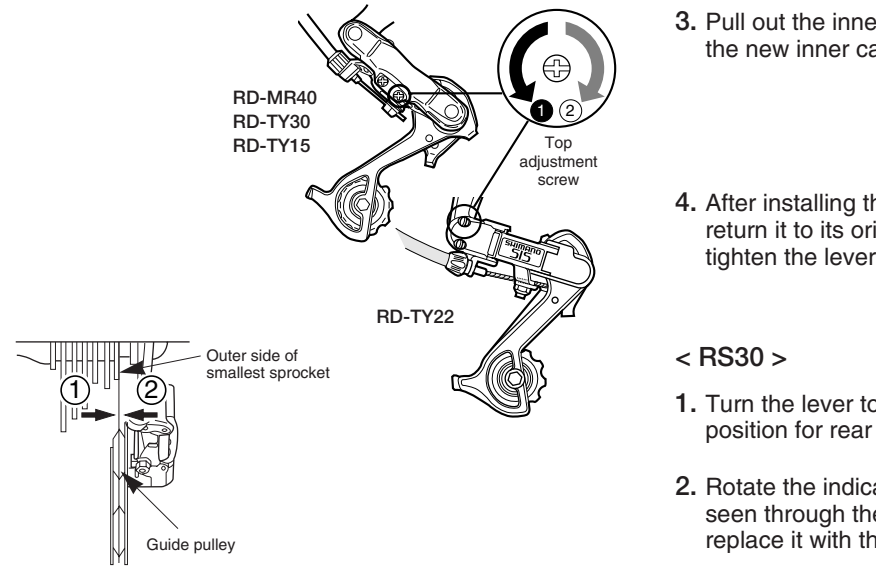
6. Troubleshooting chart  
After completion of steps 1 - 5, move the shifting lever to check the shifting. (This also applies if shifting becomes difficult during use.)

If the chain falls to the crank side	Tighten the top adjustment screw clockwise (about 1/4 turn).
If shifting is difficult from the intermediate chainring to the largest chainring	Loosen the top adjustment screw counterclockwise (about 1/8 turn).
If shifting is difficult from the smallest chainring to the intermediate chainring	Loosen the low adjustment screw counterclockwise (about 1/4 turn).
If there is interference between the chain and the front derailleur inner plate at the largest chainring	Tighten the top adjustment screw clockwise (about 1/8 turn).
If there is interference between the chain and the front derailleur outer plate at the largest chainring	Loosen the top adjustment screw counterclockwise (about 1/8 turn).
If there is interference between the chain and front derailleur inner plate when the rear sprocket is shifted to the largest sprocket when the chainwheel is at the intermediate chainring position.	Loosen the outer casing adjustment barrel counterclockwise (1 or 2 turns).
If shifting is difficult from the largest chainring to the intermediate chainring	Tighten the outer casing adjustment barrel clockwise (1 or 2 turns).
If the chain falls to the bottom bracket side	Tighten the low adjustment screw clockwise (about 1/2 turn).

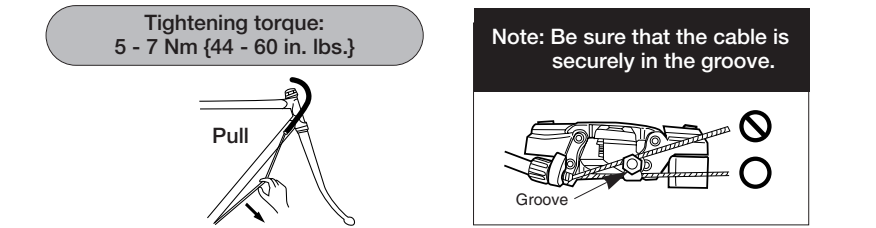
\* SL-RS40-L

## Stroke adjustment and cable securing

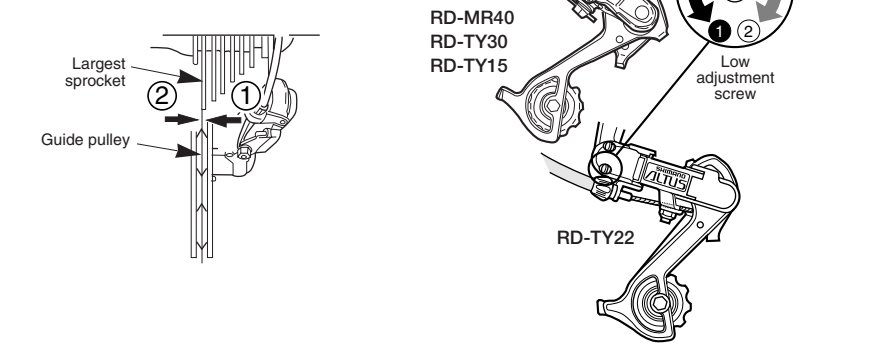
1. Top adjustment  
Turn the top adjustment screw to adjust so that the guide pulley is below the outer line of the smallest sprocket when looking from the rear.



2. Connection and securing of cable  
Connect the cable to the rear derailleur and, after taking up the initial slack in the cable, reattach to the rear derailleur as shown in the illustration.  
Secure the cable by pulling it with pliers with a force of 5-10 kg.

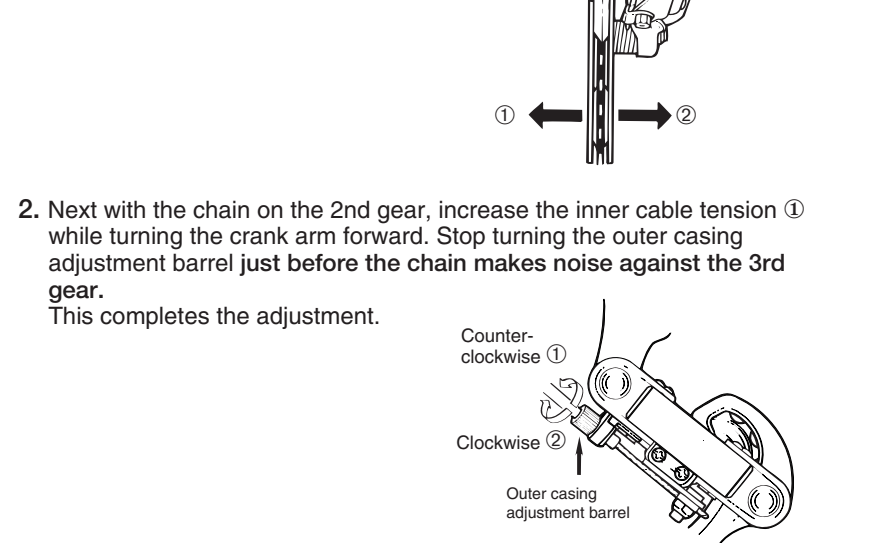


3. Low adjustment  
Turn the low adjustment screw so that the guide pulley moves to a position directly below the largest sprocket.



## SIS Adjustment

1. Operate the shifting lever to move the chain from the top gear to the 2nd gear.  
\* If the chain will not move to the 2nd gear, turn the outer casing adjustment barrel to increase the tension (clockwise).  
\* If the chain moves past the 2nd gear, decrease the tension (counterclockwise).

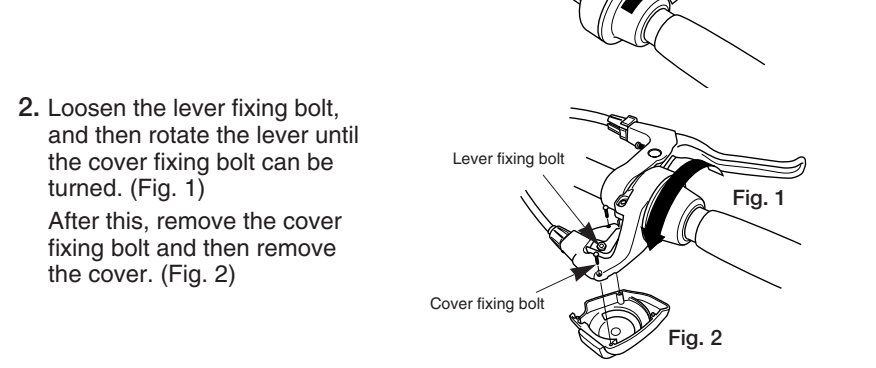


2. Next with the chain on the 2nd gear, increase the inner cable tension while turning the crank arm forward. Stop turning the outer casing adjustment barrel just before the chain makes noise against the 3rd gear. This completes the adjustment.

For the best SIS performance, periodically lubricate all power-transmission parts.

## Replacing the inner cable

< RS40 >  
1. Turn the lever to the initial position (low position for front lever; top position for rear lever).



2. Loosen the lever fixing bolt, and then rotate the lever until the cover fixing bolt can be turned. (Fig. 1)  
After this, remove the cover fixing bolt and then remove the cover. (Fig. 2)

3. Pull out the inner cable and replace it with the new inner cable. (Fig. 3)

4. After installing the cover, rotate the lever to return it to its original position, and then tighten the lever fixing bolt.

< RS30 >  
1. Turn the lever to the initial position (low position for front lever; top position for rear lever).  
2. Rotate the indicator with your finger until the inner cable drum can be seen through the replacement hole. Then pull out the inner cable and replace it with the new inner cable.